

KCMO MANHOLE REHAB TRIAL USING GEOKRETE®

Snapshot

Project: GeoKrete® Manhole Rehab Trial

Owner: KCMO

Problem: Highly corroded manhole, connected to force main, in need of corrosion protection. H²S levels ranged from 165-190 ppm.

Application:

- Hyperform® Rapid Setting Patching Material
- GeoKrete® - 1 1/2" on walls. Troweled to smooth finish.

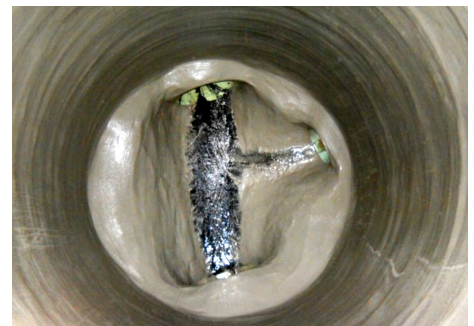
GEOKRETE EXCELS IN MANHOLE REHAB TRIAL WHERE H²S LEVELS VERY HIGH

This manhole was selected by KCMO as a trial/demonstration for Quadex™ GeoKrete. This structure was subjected to high levels of H²S with the upstream manhole being a force main receiving manhole. H²S levels ranged from 165-190 ppm.



The manhole was prepped using a 4,000 psi water blaster. The joints were sealed with Quadex Hyperform®.

The manhole was lined with 1 ½ inches of Quadex GeoKrete, which provides a monolithic, fully structural, corrosion resistant liner at the most economic pricing available. Yet again, another successful in-field trial of Quadex GeoKrete.



Compared to Baseline for Trenchless Repair Systems for Structural Rehabilitation of Civil Infrastructure