

MANHOLE REHABILITATION PILOT TEST BENTON, AR

Snapshot

Project: GeoKrete® Manhole Rehab Trial

Owner: City of Benton, AR

Problem: Heavily corroded manhole
with extremely high H2S levels

Application:

- Hyperform® Rapid Setting Patching Material
- GeoKrete - 1 1/2" spray-applied throughout, troweled to smooth finish.

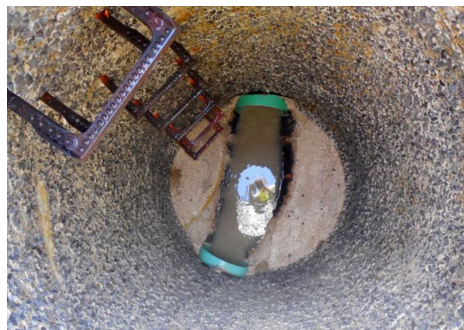
CITY OF BENTON, AR IMPRESSED WITH GEOKRETE® IN MANHOLE REHAB PILOT TEST

This was a highly corrosive manhole picked by Benton Utilities as a trial / demonstration for Quadex™ GeoKrete®, a structural, corrosion resistant geopolymer mortar. This manhole was approximately 8 ft. in depth and had a forcemain dumping into the manhole upstream. The manhole was in desperate need of a structural lining system containing extreme corrosion resistant properties. H2S readings were between 195 & 225 ppm.



The walls were power washed with 4,000 psi and the steps were removed. Because of the severe deterioration of the bench, we rebuilt it higher with Quadex Hyperform® to control the flow from spilling over the bench.

This manhole was lined with with approximately 1 ½ inches of Quadex GeoKrete. This is another successful in-field demonstration of Quadex GeoKrete. After being in the ground for over 1 ½ years, the GeoKrete lined manhole is still structurally sound with no signs of corrosion deterioration present.



Compared to Baseline for
Trenchless Repair Systems for
Structural Rehabilitation of
Civil Infrastructure