

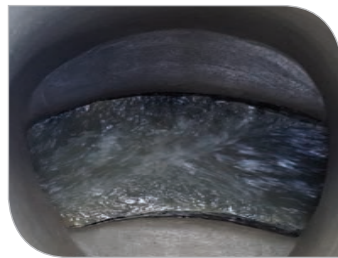
## VORTEX PRODUCTS DIVISION

delivers industry leading trenchless repair products to the municipal, industrial and commercial infrastructure marketplace. From manholes and sewer rehab to residential plumbing repairs, we can help you do your job faster and more cost-effectively.

## VORTEX PRODUCTS IN ACTION

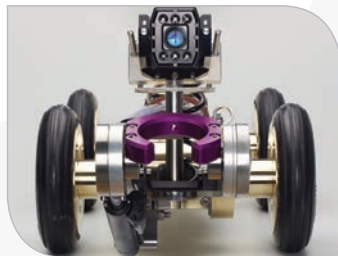
**Problem:** Three miles of stainless steel piping system serving major resort pool and spa system in need of complete restoration.

**Solution:** The Picote Brush Coating System, featuring Stag DC1000E 100% solids epoxy resin, completely rehabilitated the entire system, and saved the company over \$1 million.



## ADVANCED REPAIR MATERIALS

- Geopolymer
- Hybrid Cements
- Epoxy Coatings
- Polymeric Materials
- Construction Materials
- Application Equipment



## SEWER ROBOTICS & PIPE CRAWLERS

- Advanced Pipe Robots
- Reinstatement Cutters
- Pipe Inspection Crawlers
- Cutting Heads & Accessories



## PIPE & DRAIN TOOLS

- Mechanical Cleaning
- Cutting & Reinstatement
- Small Diameter Lining Tools



## VORTEX SERVICES DIVISION

Dig and replace methods are expensive. But, don't let that keep you from making the necessary infrastructure repairs before it's too late. Vortex Services offers a broad range of proven trenchless solutions, backed by years of experience, to best fit your project needs.

- 25%-30% less expensive
- 50-60% less time to complete
- Minimal surface level disruption
- Fewer detours and congestion

## VORTEX SERVICES IN ACTION

**Problem:** Triple barrel storm culverts beneath major roadway damaged by Hurricane Harvey were on the verge of collapse.

**Solution:** Cleared culverts of debris, repaired voids and then structurally restored with our Geopolymer lining system. No digging or replacement needed.



## MANHOLE, PIPE, CULVERT & TUNNEL RENEWAL

- Manhole Rehab
- Geopolymer Lining
- Cured-in-Place-Pipe (CIPP)
- Brushed-in-Place-Pipe (BIPP)



## PIPE BURSTING & SLIP LINING

- Sewer Bursting
- Water Bursting
- Replacement or Insertion



## TURNKEY BYPASS & DEWATERING

- Design
- Build
- Operate