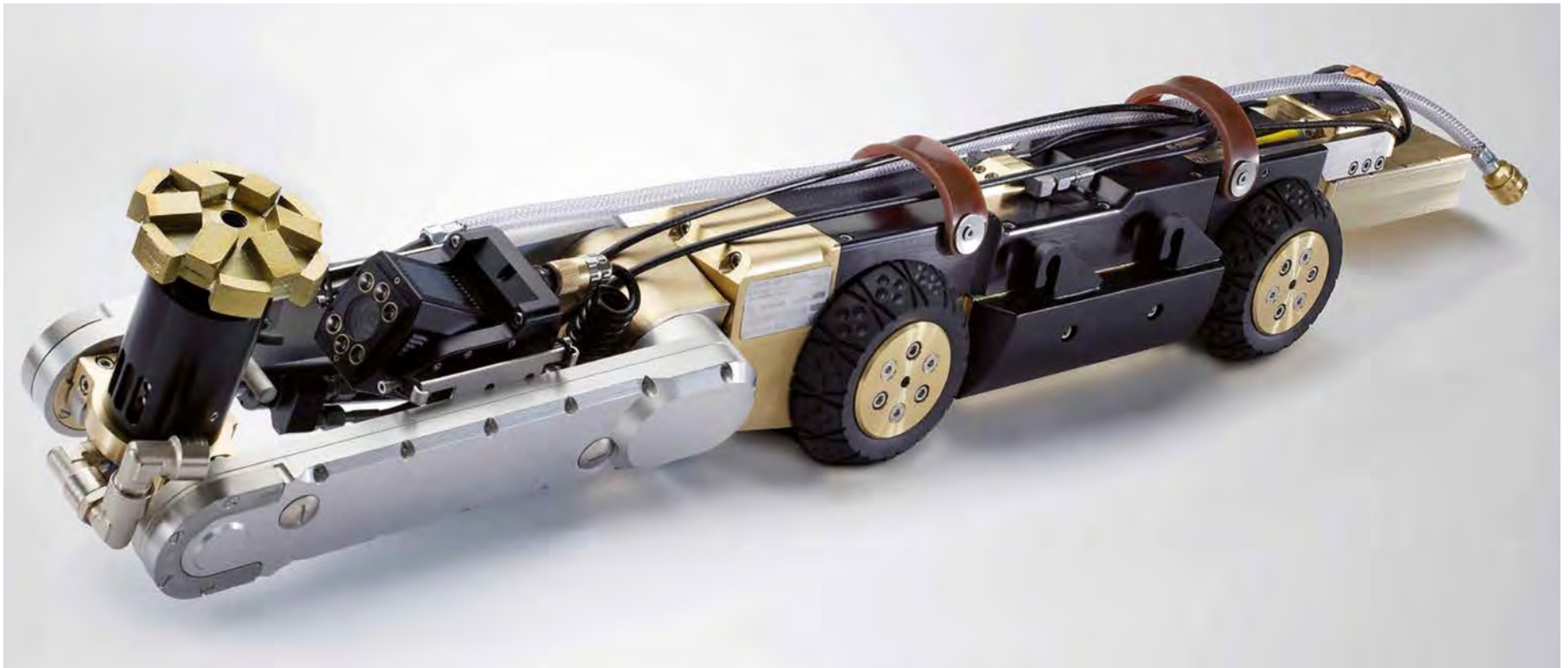




SCHWALM
USA



The Talpa FSR 2060 Sewer Rehab Robot
System Components and Accessories



Talpa FSR 2060 – Data and Facts

Application Sectors

- Trenchless partial rehab of sewer lines
- Primary line accessible I.D. range: 7.5 - 24 in.
- Rehab of lateral connections with hat seals*, accessible I.D. range: 3.50 – 10 in.
- Localized TV inspection of main lines and laterals for internal QA

Robot Functions

- Milling of concrete, ceramics, organic substances, plastics
- Abrasive cutting: cut out protruding obstacles
- Cleaning with specialized brushes, high-pressure jetters
- Maneuvers and positions lateral connection packers
- Compression plugs for sealing of inoperative lateral lines
- Reinstatement of CIPP liners

Degrees of Freedom of the Talpa FSR 1330

- Robot carriage: drives forwards/backwards
- Access arm: swivels up/down
- Access arm: swivels clockwise/counterclockwise
- Tooling mount: swivels about transverse axis up/down
- Camera: 270° camera swiveling in lateral axis (+/- 135°)

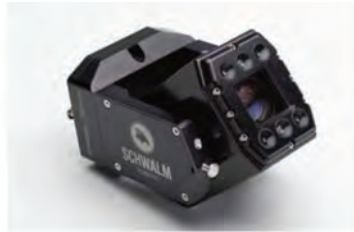
Available Cameras for Talpa FSR 2060

The MiMoZo Camera: Robust High-Performance Zoom Camera

- Image sensor: 1/4 in. CCD
- Resolution: 520 TV lines, PAL or NTSC available
- Minimum illumination: 2.5 Lux (daylight mode, real-time color mode)
- Zoom lens: 10x optical, Focus: automatic and manual
- Electronic shutter: automatic and manual (8 steps)
- Swivel feature: +/- 135° (backward view), wear-resistant friction clutch
- Watertight: pressure monitoring to 5 psi (0.3 bar) with indicator light
- Quick mount: assembly to the robot with a few steps

The MiNa Camera: Sewer Camera, Compact Version

- Image sensor: 1/3 in. Sony Super HAD CCD II
- Resolution: 600 TV lines, PAL or NTSC
- Minimum illumination: 2.0 Lux (daylight mode, real-time color mode)
- Swivel feature: +/- 135° (backward view), wear-resistant friction clutch
- Watertight: pressure monitoring to 5 psi (0.3 bar) with indicator light
- Quick mount: assembly to the robot with a few steps



System Components and Accessories

Tooling / Attachments

- Piranha heads: conical or ball-shaped, small/large each
- Mushroom head: small/large each
- Compressed air-powered chisel
- Compressed air-powered disc grinders
- High-pressure jet nozzles, cup and disc brushes
- Powered wrenches for 4 / 5 / 6 / 8 in. compression plugs

Wheels

- Solid-rubber surfaced wheels with high-grip treading
- Carbide-surfaced wheels, conical with solder-bonded carbide texturing

Axle Extenders

- Disc sets available in widths of 1 / 1.15 / 2 in.
- For line diameters 10 in., 12 in., 14 – 16 in., 20 – 24 in.

Recommended Air Motors

- 13000, 8 in.
- 12000, 8 - 24 in.
- Motor lift and extensions available

Schwalm Digital Control Module

- Controls robot functions
- Power supply: 110 V or 230 V
- NTSC and PAL systems
- Control unit with serial interface: alphanumeric display of date, time and robot position (ft or m)
- Operating panel with two joysticks, options: keyboard, flat screen
- Available as 19 in. stationary rack module or portable module in aluminium carrying case with integrated screen

Automatic Cable Drum

- Electrically powered cable feed with self-levelling winding, cable length: 660 ft., operates from 110 V or 230 V power
- Output and retrieval: automatic or manual, winding tension and speed: closed or open-loop control
- Cable length reading accurate to nearest .50 in, with digital display reset function for positioning to defined zero points

Supply Lines

- 500 ft. in length, extension segments available for additional length, with hose reel for feed and retrieval
- Bonded twin hose, air and water



SCHWALM
USA



SCHWALM USA – Systems for Trenchless Sewer Rehabilitation

Contact Us

1-855-WHYDIG1

17 AD Asbury Drive

Greenville, SC 29605

schwalm-usa.com

- Sewer Rehab Robots, System Components and Accessories
- Cutter Heads
- Lateral Connection Packers

Design, technical data and features are subject to change. All photographic material shown must not necessarily comply in full detail to our current products shipped.

A VORTEX COMPANY