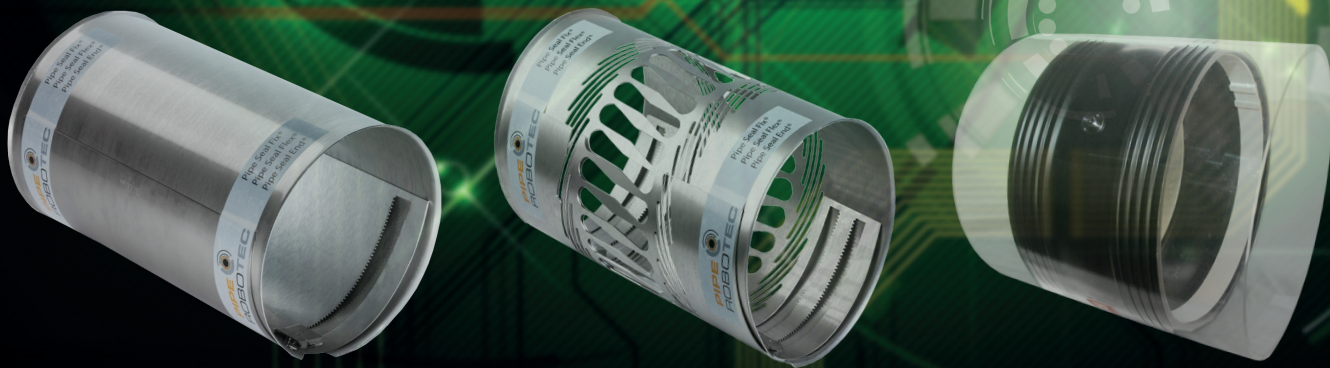



Introducing The Next Generation Of Internal Pipe Sealing Systems

from Pipe-Robo-Tec USA



Quick. Cost-Effective. Permanent.

PIPE 
ROBOTEC
USA

Product Advantages

A Simple Solution To A Complex Problem

Introducing Pipe-Robo-Tec USA joint seals and sleeves — designed to reinforce pipe joints and provide a watertight seal in municipal piping systems.

Supports Wide Range of Pipe Materials

Made of long lasting, corrosion resistant stainless steel V4A and compression sealing EPDM, Pipe-Robo-Tec USA products are approved for use in a wide range of pipe materials:

- RCP
- Non-RCP
- Clay
- Ductile Iron
- GRP
- PVC
- HDPE

Proven In Several Pipe Applications

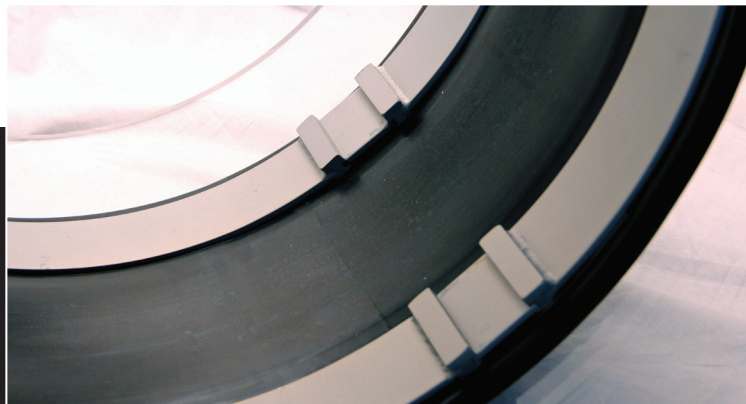
- Potable Water
- Process Water
- Wastewater
- Salt Water
- Fuel
- Gas

Effectively Repairs the Following

- Longitudinal cracks
- Transverse cracks
- Radial cracks
- Broken fragments
- Root penetration
- Socket end leak

Company Expertise & Support

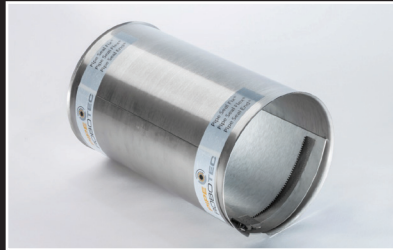
Pipe-Robo-Tec USA personnel will educate, train and provide field support to ensure your installations are seamless and trouble-free.



Product Line

Sleeves for Non-Accessible Pipes

Pipe-Robo-Tec USA pipe seal technology is primarily a mechanical, continuous mounting stainless steel sealing system designed for non-accessible piping systems. They feature a unique locking system that ensures the sleeve never slips or breaks its seal.



Pipe-Seal-Fix®

Pipe-Seal-Fix is the perfect solution for single mounting, or even for stringing together a series of PSF seals, to address longitudinal cracking.

Available Standard Dimensions: 8" - 24"



Pipe-Seal-End®

With our product, the application of the liner end seal does not depend on the liner thickness. Pipe-Seal-End also forms a durable packing between the liner surface and the old pipe even when ground water is pressing.

Available Standard Dimensions: 8" - 24"



Pipe-Seal-Flex®

Pipe-Seal-Flex can be used to correct pipe misalignment and axial bending. Due to the alignment of lamellar openings of stainless steel sleeve, and the use of the sealing element EPDM, the sleeve forms a positive connection with the pipe wall.

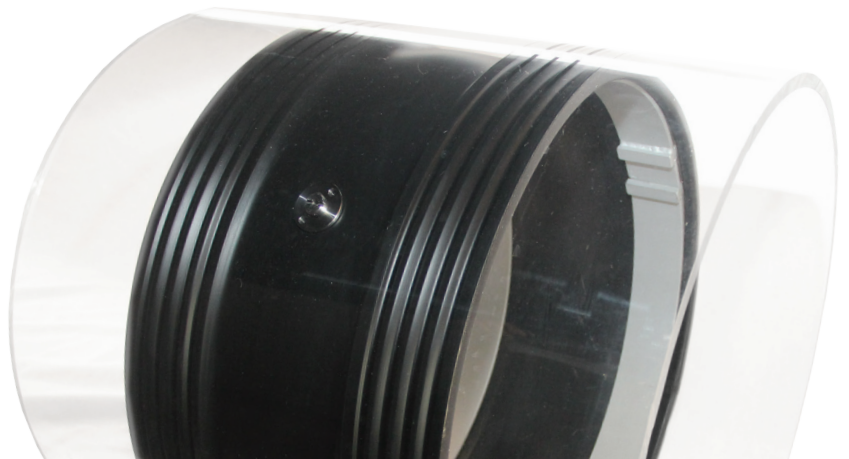
Available Standard Dimensions: 8" - 12"

Joint Seals for Accessible Pipes



RedEx®

RedEx Internal joint seal is designed for accessible pipelines in diameters ranging from 32" - 236" When comparing other joint seals, RedEx features an extra profile, further protecting the pipe joint from potential infiltration and/or exfiltration. RedEx is also capable of sealing bends, pipe tolerances and misalignments.



Product Technical Envelope

Pipe-Seal-Fix

- Suitable Piping Systems: Potable water, service water, wastewater, salt water
- Rubber Quality: EPDM, NBR
- Stainless Steel Quality: 1.4404, AISI 316 L; 1.4571, AISI 316 Ti, according to EN 10020
- Temperature ranges:
 - 68°F - 284°F (EPDM)
 - non-standard temperature ranges on demand
- Pipe Materials: Vitrified clay, steel, reinforced concrete, concrete, asbestos cement, grey cast iron, glass fibre reinforced plastics, PP-pipes, PE

Pipe-Seal-End

- Suitable Pipe Systems: Service water, wastewater, salt water, potable water
- Rubber Quality: EPDM
- Stainless Steel Quality: 1.4404 AISI 316 L; 1.4571 AISI 316 Ti

Pipe-Seal

DIN EN 681 (Water/Waste water)
DIN 53504 (Physical test)
DIN 4060 (Physical test)
DIN DVGW W270 tested
Test of durability 50 years

Tests Applied for:

ANSI/NSF Standard Potable water
WRAS Water Regulations Advisory Scheme
DIBt

RedEx®

- Suitable Pipe Systems: Potable water, service water, wastewater, salt water, fuel, gas bases, acids
- Rubber Quality: EPDM, NBR, SBR, Viton
- Steel Sections: Flat Steel 2" x .196", 2" x .315", 2" x .5"
- Stainless Steel Quality: 1.4404, AISI 316 L, 1.4571, AISI 316 Ti, 1.4307, AISI 304 L according to EN 10020
- Pressure/Vacuum: Internal pipe pressure: 363 psi
External pipe pressure: 145 psi (infiltration) low- pressure/vacuum suitable and adjusted
- Temperature ranges:
 - 68°F to 284°F (EPDM)
 - non-standard temperature ranges on demand
- Pipe Materials: Vitrified clay, steel, reinforced concrete, concrete, asbestos cement, grey cast iron, GRP, PP-pipes, HDPE
- Seal Sections/Widths: 10.25", 14.17", 19.69". Non-standard widths can be custom ordered

National

Potable water DIN DVGW W20 (mixture)
Potable water Bundesumweltamt (profile)
Stability and bonding DIN EN 681-1
Stability for long term DIN EN 180 175 (pH-value 2-12), 50 years
Welded seam EN ISO 15614-1, DIN EN ISO 6892-1
Elastomer ISO 37, DIN EN ISO 11358

International

BS 6920-1:2000 – WRAS (Water Regulations Advisory Scheme)
Test certificate – NSF-WRC Report MAT/LAB 159 D/2
Attestation de Conformité Sanitaire
These approvals are for the compound, the approvals for the profiles are currently checked.

1 / 855 / WHYDIG1
www.piperobotecusa.com

Vortex Products Division
Pipe Robo Tec USA
18150 Imperial Valley Dr.
Houston, TX 77060

VORTEX
companies
CIVIL INFRASTRUCTURE SOLUTIONS

A MEMBER OF THE
VORTEX FAMILY